

Ashcroft® Gauges, General Information

PIP #: ASH-PI-44

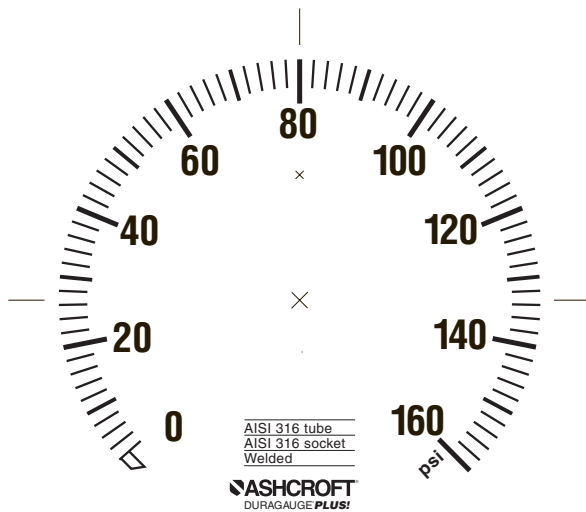
Applicable to:

Process media compatibility with the bourdon tube and socket of a pressure gauge is critical to ensure safe operation of the gauge.

Ashcroft pressure gauge dials are clearly printed with the bourdon tube and socket materials. This is an important feature that allows the user to confirm the gauge being installed is appropriate for the service.

Pressure gauge dials are manufactured in accordance with either ASME B40.100-2013 standard or EN 837-01 standard.

Examples of each are shown below.



Dial in Accordance with
ASME B40.100-2013



Dial in Accordance with
EN 837-01